



A Zipped version of the Urban Hood in the same heavyweight, heavy duty fabric ideal for workwear. The metal zip is fully covered to maximise the print surface area and matches the metal eyelets to give a rugged, industrial look perfect for staff uniforms, music and sports merchandise.

- Ringspun Cotton & Recycled Polyester
- Heavy Zip Through Hood With Double Lined Extra Deep Hood
- Draw Cord With Metal Eyelets
- Kangaroo Pouch Pockets
- Longer Cuffs & Waistbands For Added Style
- Concealed Zipper



MATERIAL
50% Cotton 50% Recycled Polyester



WEIGHT
300 gm²

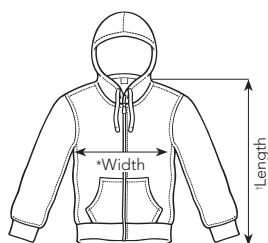


SIZE
S-3XL



ORIGIN
Pakistan

HS CODE
6110309100



*Half Chest Taken 2.5cm Below Underarm
†Taken From Highest Shoulder Point

Sizes	S	M	L	XL	2XL	3XL
Chest To Fit (In)	36-38	40-42	42-44	44-46	48-50	50-52
Width (cm)*	50.8	55.9	59.6	63.5	66	69.9
Length (cm)†	72.2	73.7	76.2	78.7	81.3	83.8

Measurements Are Approximate. Manufacturer Tolerances Apply.

BLACK
36

True Black TPX
426C
C | M | Y | K
94 | 77 | 53 | 94

NAVY
32

19-3920 TPX
2380C
C | M | Y | K
100 | 65 | 0 | 60